

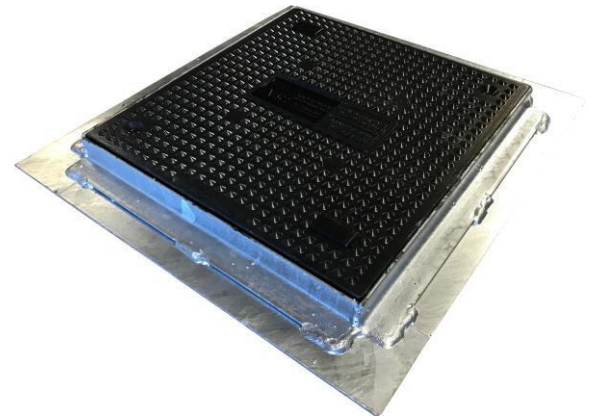
Anti-Skid Composite Covers

Non-Slip access covers for ducted chamber systems

Composite anti-skid access covers are suitable for installation on footways, pedestrian areas and all other low traffic areas.

Applications Include;

- TRAFFIC SIGNALS
- STREET LIGHTING
- TELECOMMUNICATIONS
- CCTV
- VALVE & METER
- DRAINAGE
- UTX
- UTILITY SERVICES NETWORKS



Key Advantages:

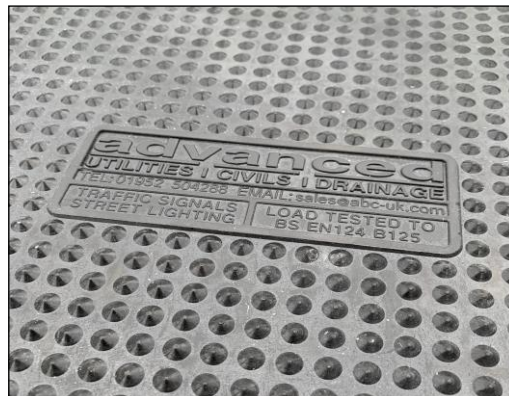
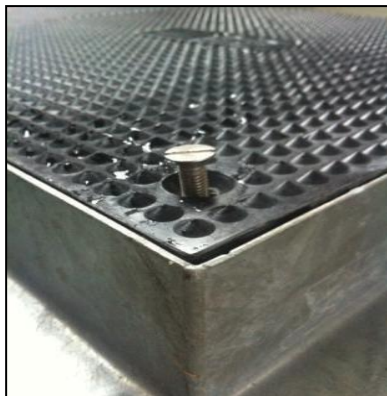
- Anti-Slip Finish
- No Inherent Scrap Value
- Lightweight yet Durable
- Resistant to Chemicals
- Maintenance Free
- Galvanised Steel Rising Frame
- Locked with Countersunk Slotted Screws

EasyGRIP® Composite Access Covers

Pendulum testing is used to assess the skid resistance of access covers. This method is based on a swinging imitation heel, which sweeps over the area of the access cover in a controlled manner. The skid resistance of the tested area has a measurable effect on the pendulum value.

Independent tests carried out on our access covers yielded a low slip potential in-line with the table below.

	Pendulum Test Value
High Slip Potential	0-24
Moderate Slip Potential	25-35
Low Slip Potential	36+



Ref	Size	Depth
CC3030	300x300mm	25/75mm
CC4530	450x300mm	25/75mm
CC4545	450x450mm	25/75mm
CC6045	600x450mm	25/75mm
CC6060	600x600mm	25/75mm
CC7575	750x750mm	25/75mm
CC9045	900x450mm	25/75mm
CC9060	900x600mm	25/75mm
CC9090	900x900mm	25/75mm
CC12045	1200x450mm	25/75mm
CC12060	1200x600mm	25/75mm
CC12090	1200x900mm	25/75mm
CC120120	1200x1200mm	25/75mm
CC15075	1500x750mm	25/75mm

Accessories:

- EasyPIT® Access Chambers
- Carriageway Loop Boxes
- Ductile Iron Manhole Covers
- Fabricated Steel Access Covers

Head Office:

Civils House | Cemetery Road | Dawley | Telford | Shropshire | TF4 2BS

Tel: +44 (0) 1952 504288

Email: sales@abc-uk.com

Web: www.abc-uk.com

EasyGRIP® Composite Access Cover

1200x1200mm B125 Loading Galvanised Rising Frame

Clear Opening Size

1200x1200mm

Product & Datasheet Code: CC120120B125GALV

Load Data

B125 to BS EN124
12.5T Test Load

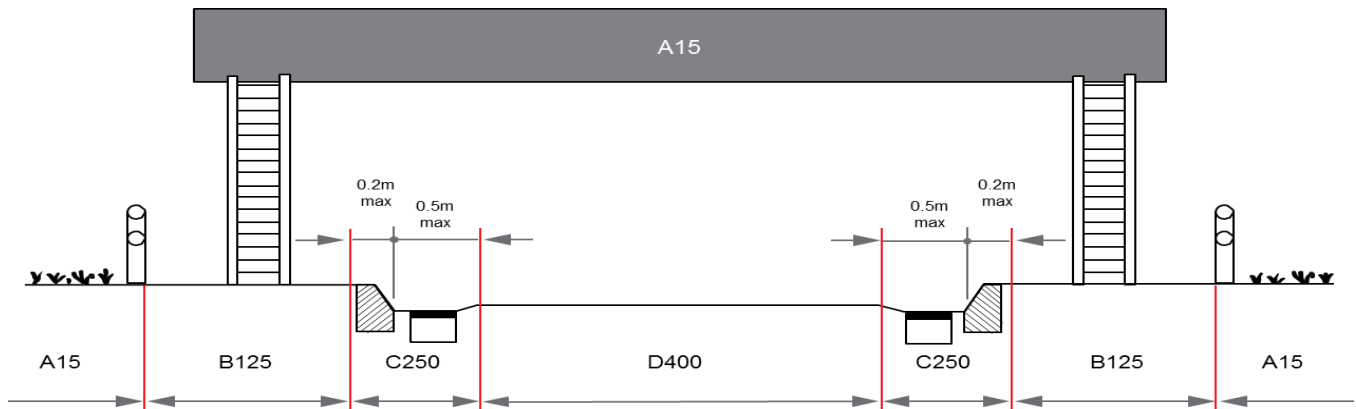
See illustration below

Product Information

External Dimensions: 1324x1314mm
Depth: 27mm to the shoulder, 50mm overall depth
Overall Weight: 122.64kg
Cover Material: Mafill® CR CT 5344 H (datasheet available on request)
Frame Material: Galvanised steel
No. of Plates: 4
Note: Galvanised items to BS EN ISO 1461: 2009

Opening Type: Lift out covers
Qty Per Pallet: 5

Badging: Standard badges indicate Advanced but owner brand/name can be accommodated
Locking Type: Bolt Down



Drawing References

Frame: CF-012001200

Plate: 617x617

Advanced Building Composites Ltd reserves the right to alter this document